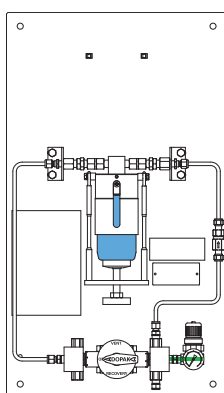


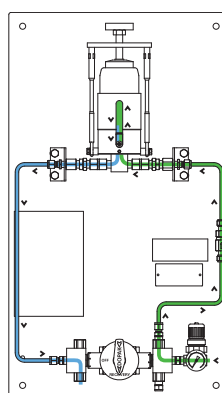
The Dopak SRS offers the ability to recover a liquid sample from the sample bottle without the risk of spillage or contamination. Applications for this system can be found in plant laboratories. The unique design offers a one handle operation by multiple valves. In addition, the nitrogen purge not only assists in driving the liquid out of the sample bottle, but also cleans the whole system including needle assembly and sample bottle.

1 OPERATION/FUNCTION



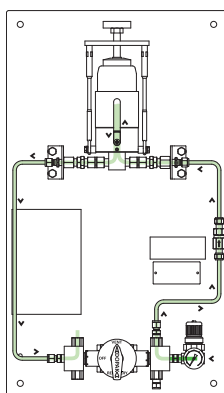
0 - off

Provide a new septum on your sample bottle. Insert the bottle, with cap and septum into the sleeve. Put the special bottle retaining clip in place and turn the thumb screw until the bottle is fixed in the sleeve.



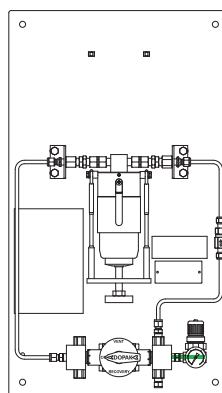
1 - recovery

Turn the sleeve upside down and fix the special bottle retaining clip in the terry clips. Turn the handle to the "recovery" position, allowing the inert gas to drive the liquid out of the sample bottle to the process-out connection. This position can be held for any required time.



2 - vent

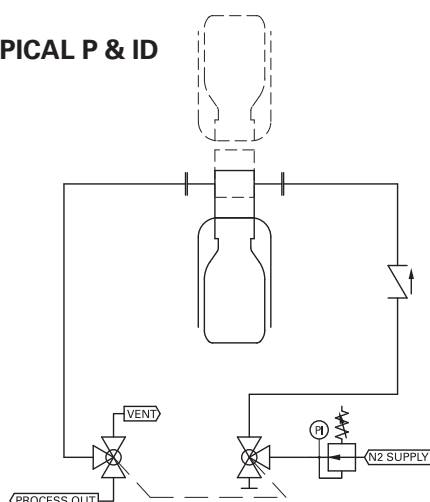
Turn the handle to the "vent" position allowing the sample bottle to depressurise.



3 - off

Turn the handle to the "off" position and turn the sleeve back to the normal position. Unfix the thumb screw, remove the bottle retaining clip and pull the bottle out from the sleeve. The septum reseals automatically.

2 TYPICAL P & ID

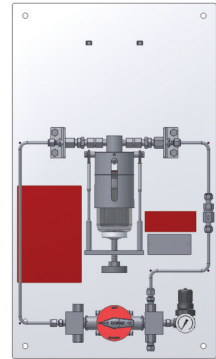


3 FEATURES/ADVANTAGES/PROPERTIES

- Closed recovery/no spillage
- One handle operation
- Purging of the system
- Depressurisation of sample bottle

4 BASIC SPECIFICATIONS

Material	SS316, SS316L.
Sleeve type	60cc sleeve with bottle retaining clip.
Needle assembly	Single piece VTO concentric needle assembly with vent to outlet connection 1/4" FNPT. Process/vent needle ID:1.35 / 3.00 mm
Valve	Three-way ball valve type H7165. PTFE seats. Pressure range 34 bar @ 20°C (493psig @ 70°F). Temperature range -40/+177°C (-40/+350°F).
Operation	Manual.
Connections	1/4" FNPT.
Please note:	the above is a basic specification only. DOPAK® Samplers can be offered with a wide variety of options as mentioned below.

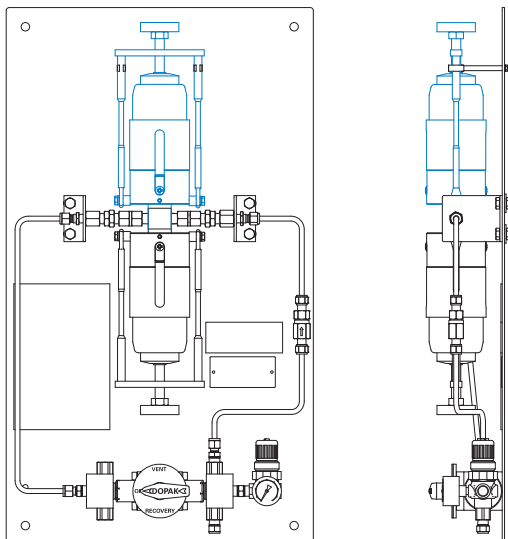


5 OPTIONS

- Spring return handle
- Lockable handle
- Pipe stand
- Enclosure
- Mounting brackets
- Exotic materials
- Larger/smaller sample size
- Temperature indicator

For more information please refer to our sheets:

Components for DOPAK® process samplers.



Dopak Inc.

Houston, Texas 77041, USA
 Phone 713-460-8311
 Fax 713-460-8578
 E-mail info@dopak.com

Dovianus BV

Bergschenhoek, The Netherlands
 Phone +31 10 524 20 00
 Fax +31 10 456 67 74
 E-mail info@dopak.nl

Your local representative:

