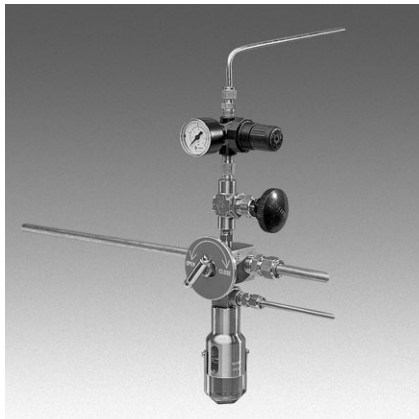
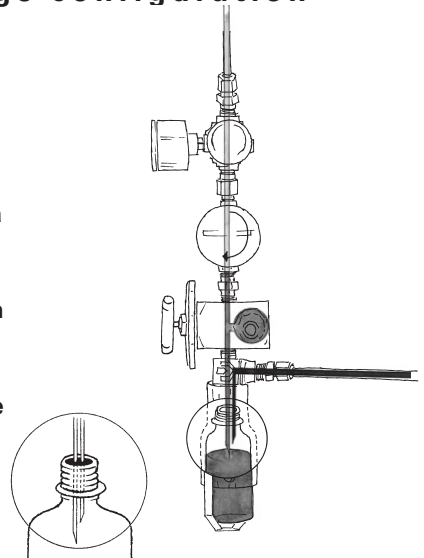


DOPAK[®] Process Sampler Type DPM

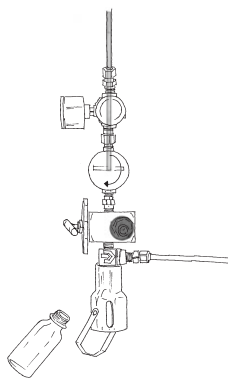
in line, needle purge configuration



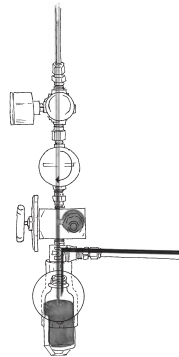
The ability to purge the needle assembly, both before and after sampling, ensures there is no residue build up in the needle assembly after retrieval of a representative, contamination free sample. The DPM type of sampler in an in line needle purge configuration allows product to flow directly into the sampler via an in line sample valve.



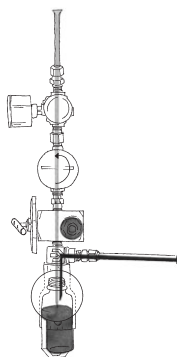
1 OPERATION/FUNCTION



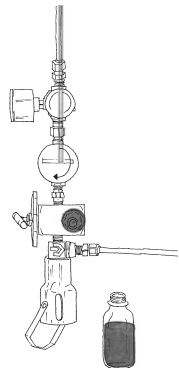
0 - off
Provide a new septum on your sample bottle. Insert the sample bottle, with cap and septum into the sleeve until the septum is pierced by the needles. Put the bottle retaining clip in place.



1 - sample
Turn the handle of the needle valve anti clockwise, allowing the product to flow into the sample bottle. When the required amount has been taken, turn the handle clockwise to close the valve.

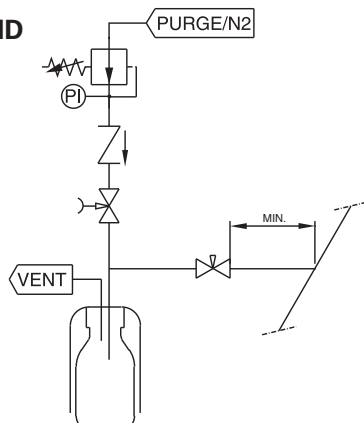


2 - needle purge
Open the valve in the purge line allowing a flow of gas through the sampler to ensure any residual liquid is forced into the sample bottle. This position can be held for any required time. Close the valve.



3 - off
Remove the bottle retaining clip and pull the bottle out from the sleeve. The septum reseals itself automatically.

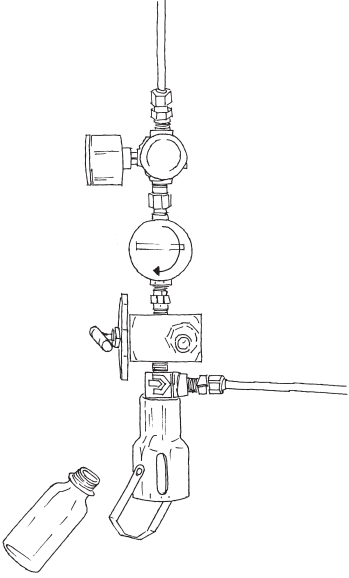
2 TYPICAL P & ID



3 FEATURES/ADVANTAGES/PROPERTIES

- Sampling directly under process conditions
- Low/elevated pressure applications
- Representative sampling
- Zero dead volume
- Closed sampling
- No build up of sample material in the needle assembly
- Inertizing of bottle

4 BASIC SPECIFICATIONS

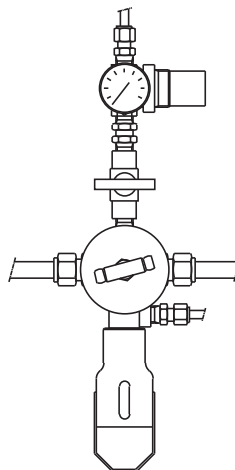
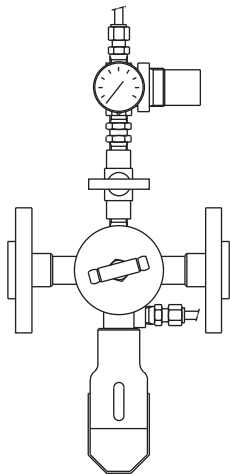
Material	SS316.	
Sleeve Type	60cc sleeve with bottle retaining clip.	
Needle Assembly	Single piece VTO needle assembly with vent to outlet connection 1/4" FNPT. Process/vent needle ID: 1.35 mm.	
Valve	In line valve. Pressure range 206 bar @ 20°C (3000 psig @ 70°F). Temperature range -20/+230°C (-4/+446°F).	
Operation	Manual.	
Connections	Process: 1/2" FNPT. Purge: 1/4" FNPT, regulator, gauge and check valve included. Vent: 1/4" FNPT.	

Please note: the above is a basic specification only. DOPAK® Samplers can be offered with a wide variety of options as mentioned below.

5 OPTIONS

- Lockable handle
- Enclosure
- Steam sterilising cap
- Exotic materials
- Solvent purge facility
- Larger/smaller sample size

For more information please refer to our sheets:
Options for DOPAK® process sampler type DPM.
Components for DOPAK® process samplers.



Dopak Inc.
 Houston, Texas 77041, USA
 Phone 713-460-8311
 Fax 713-460-8578
 E-mail info@dopak.com

Dovianus BV
 Bergschenhoek, The Netherlands
 Phone +31 10 524 20 00
 Fax +31 10 456 67 74
 E-mail info@dopak.nl

Your local representative: