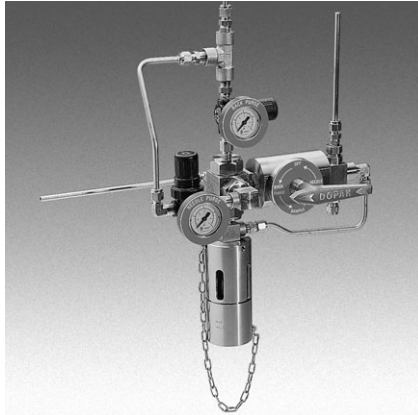
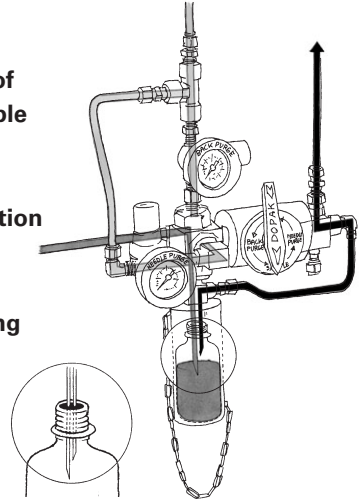


DOPAK® Process Sampler Type S32

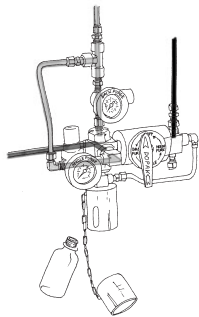
back and needle purge configuration, with vacuum connection



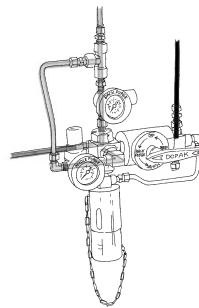
The ability to create an under pressure in the sample bottle by connection to a vacuum source ensures optimal retrieval of a representative, contamination free sample from processes at vacuum conditions or atmospheric pressure. The S32 type of sampler in back & needle purge configuration allows a gas to purge the sampler and process connection prior to sampling ensuring a fresh sample and allows purging through the needle assembly. All S32 type of samplers offer a one-handle operation by multiple valves.



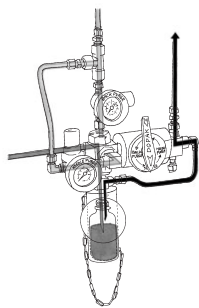
1 OPERATION/FUNCTION



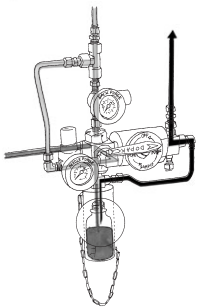
0 - off
Provide a new septum on your sample bottle. Insert the bottle, with cap and septum into the bottom part of the bayonet sleeve. Connect the bottom part of the bayonet sleeve to the upper part, move the bottom part upwards and lock it by means of turning it in the slots in the top end position.



1 - back purge
Turn the handle to the "back purge" position, allowing a flow of purge gas through the sampler to the process to ensure representative sampling. This position can be held for any required time.

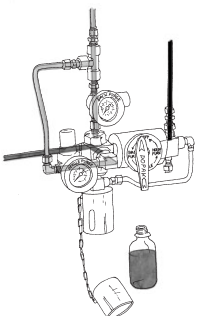
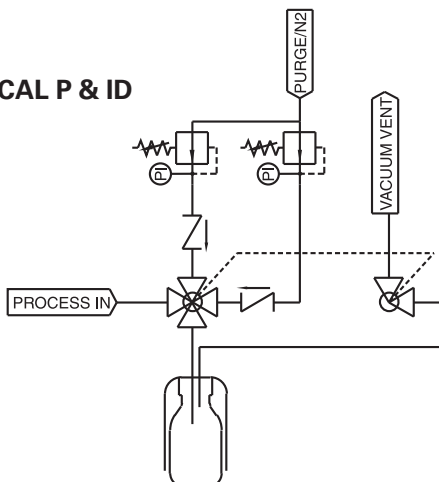


2 - sample
Turn the handle to the "sample" position, allowing the vacuum to be connected to the vent outlet of the needle assembly to create an under pressure in the sample bottle. The product flows into the sample bottle. When the required amount has been taken, turn the handle into the "needle purge" position.



3 - needle purge
In this position a flow of purge gas is allowed to go through the sampler to ensure any residual liquid is forced into the sample bottle. This position can be held for any required time.

2 TYPICAL P & ID



4 - off
Turn the handle to the "off" position. Move the bottom part of the bayonet sleeve a little bit upwards, turn it and pull out from the upper part. The septum reseals automatically. Take the bottle out of the bottom part from the bayonet sleeve.



3 FEATURES/ADVANTAGES/PROPERTIES

- | | | | |
|--------------------------|--|--------------------------|-------------------------|
| <input type="checkbox"/> | Sampling directly under process conditions | <input type="checkbox"/> | Representative sampling |
| <input type="checkbox"/> | Atmospheric and vacuum applications | <input type="checkbox"/> | Zero dead volume |
| | | <input type="checkbox"/> | Closed sampling |

4 BASIC SPECIFICATIONS

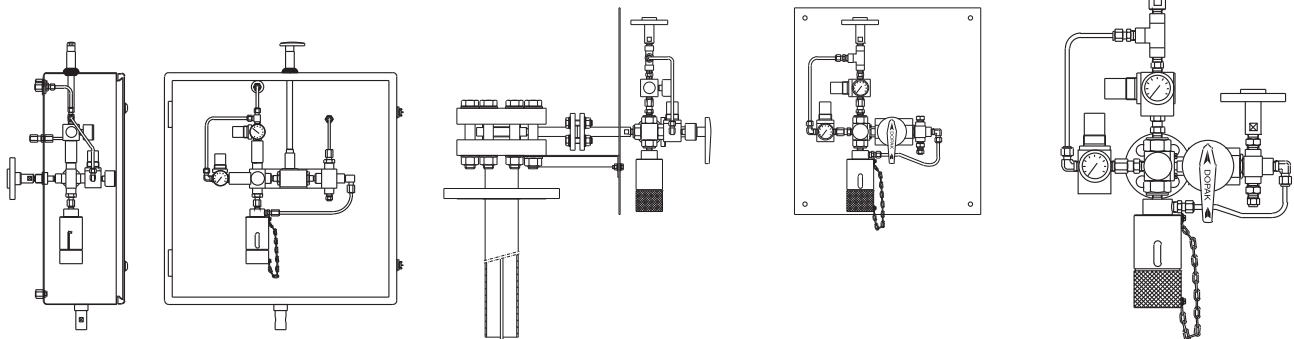
Material	SS316, SS316L.	
Sleeve Type	60cc bayonet sleeve.	
Needle Assembly	Single piece VTO needle assembly with TTC ring and vent to outlet connection 1/4" FNPT. Process/vent needle ID: 1.35 mm.	
Valve	Process: Four-way ball valve type H7911. PTFE seats, Viton A packing. Pressure range 103 bar @ 20°C (1500 psig @ 70°F). Temperature range -18/+177°C (0/+350°F) Vent: Two way ball valve type W43. PTFE seats, Pressure range 206 bar @ 20°C (3000 psi @ 70°F).	
Operation	Manual by gearbox.	
Connections	1/4" FNPT, regulator, gauge and check valve included.	

Please note: the above is a basic specification only. Dopak Samplers can be offered with a wide variety of options as mentioned below.

5 OPTIONS

- | | | | |
|--------------------------|-----------------------|--------------------------|----------------------------|
| <input type="checkbox"/> | Fixed sequence handle | <input type="checkbox"/> | Enclosure |
| <input type="checkbox"/> | Lockable handle | <input type="checkbox"/> | Sample cooler |
| <input type="checkbox"/> | Mounting plate | <input type="checkbox"/> | Mounting bracket |
| <input type="checkbox"/> | Pipe stand | <input type="checkbox"/> | Steam sterilising cap |
| <input type="checkbox"/> | Block valve | <input type="checkbox"/> | Welded connections |
| <input type="checkbox"/> | Flow meter | <input type="checkbox"/> | Exotic materials |
| | | <input type="checkbox"/> | Larger/smaller sample size |

For more information please refer to our sheets:
Options for DOPAK® process sampler type S32.
Components for DOPAK® process samplers.



Dopak Inc.
 Houston, Texas 77041, USA
 Phone 713-460-8311
 Fax 713-460-8578
 E-mail info@dopak.com

Dovianus BV
 Bergschenhoek, The Netherlands
 Phone +31 10 524 20 00
 Fax +31 10 456 67 74
 E-mail info@dopak.nl

Your local representative: