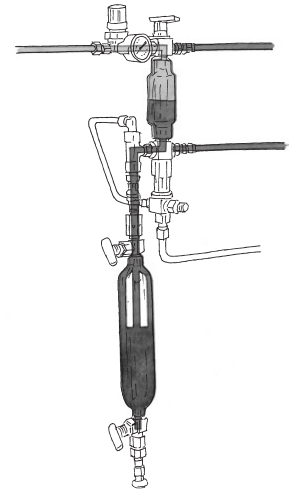


**DOPAK® Process Sampler Type S23**

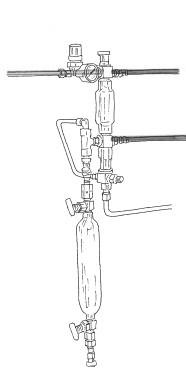
**high vapour phase configuration**



The ability to purge the sample point ensures optimal retrieval of a representative, contamination free sample. The S23 type sampler in high vapour phase configuration provides a system purge and positive vent line shut off in addition to a fixed sample volume for high vapour phase products. The unique design offers a one-handle operation by multiple valves, allowing for sampling independent of the process conditions. These features provide sample accuracy and safety.

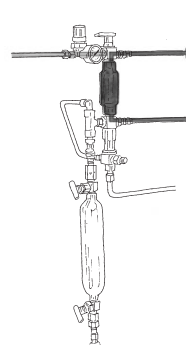


**1 OPERATION/FUNCTION**



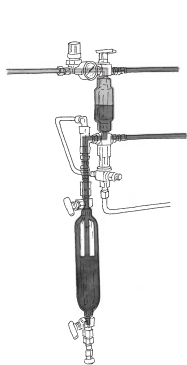
**0 - off**

Install the sample cylinder and open the top needle valve. The valve in the vent line is closed.



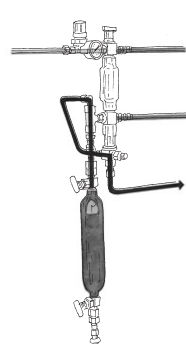
**1 - system purge**

Turn the handle to the "purge" position, allowing a continuous flow of liquid through the sample chamber to ensure representative sampling. This position can be held for any required time. The valve in the vent line is closed.



**2 - sample**

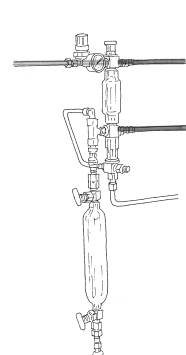
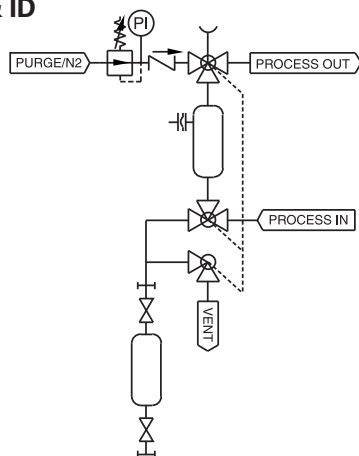
Turn the handle to the "sample" position allowing the product to flow into the sample cylinder. The fixed volume chamber determines the amount of sample. The inert gas will assist the sample to flow into the cylinder and will purge the sampler. The valve in the vent line is closed.



**3 - vent**

Close the needle valve on top of the sample cylinder and turn the handle to the vent position. The valve in the vent line is open and the volume between bottom three-way valve and needle valve on top of the sample cylinder is being vented.

**2 TYPICAL P & ID**



**4 - off**

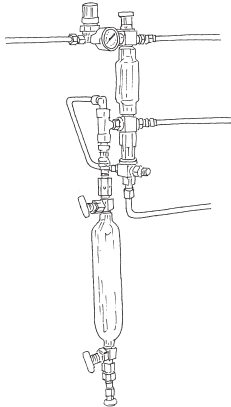
Turn the handle to the "off" position. Remove the sample cylinder. The valve in the vent line is closed.



### 3 FEATURES/ADVANTAGES/PROPERTIES

- |   |  |
|---|--|
| <input type="checkbox"/> Sampling independent of process conditions | <input type="checkbox"/> One handle operation        |
| <input type="checkbox"/> High vapour phase applications             | <input type="checkbox"/> Fixed volume sampling       |
| <input type="checkbox"/> Representative sampling                    | <input type="checkbox"/> Purging of sampler          |
| <input type="checkbox"/> Zero dead volume                           | <input type="checkbox"/> Positive vent line shut off |
| <input type="checkbox"/> Closed sampling                            |  |

### 4 BASIC SPECIFICATIONS

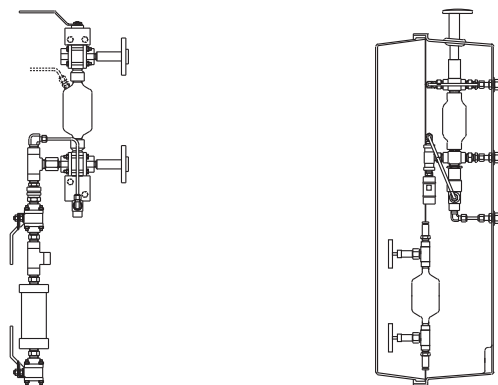
|                       |   |   |
|-----------------------|---|---|
| <b>Material</b>       | SS316, SS316L.  |  |
| <b>Cylinder Type</b>  | 75cc cylinder.  |   |
| <b>Sample Chamber</b> | 50cc.   |   |
| <b>Valves</b>         | Three-way ball valve type W83.<br>PTFE seats, Viton A O-rings.<br>Pressure range 103 bar @ 20°C (1500 psig @ 70°F).<br>Temperature range -17°C/+232°C (0°F/+450°F). |   |
| <b>Operation</b>      | Manual.   |   |
| <b>Connections</b>    | 1/4" FNPT, regulator, gauge and check valve included.   |   |

**Please note:** the above is a basic specification only. Dopak Samplers can be offered with a wide variety of options as mentioned below.

### 5 OPTIONS

- |  |   |
|--|---|
| <input type="checkbox"/> Lockable handle | <input type="checkbox"/> Steam jacket               |
| <input type="checkbox"/> Mounting plate  | <input type="checkbox"/> Sample cooler              |
| <input type="checkbox"/> Pipe stand      | <input type="checkbox"/> Mounting bracket           |
| <input type="checkbox"/> Block valve     | <input type="checkbox"/> Steam sterilising cap      |
| <input type="checkbox"/> Flow meter      | <input type="checkbox"/> Welded connections         |
| <input type="checkbox"/> Enclosure       | <input type="checkbox"/> Exotic materials           |
|  | <input type="checkbox"/> Larger/smaller sample size |

For more information please refer to our sheets:  
**Options for DOPAK® process sampler type S23.**  
**Components for DOPAK® process samplers.**



**Dopak Inc.**  
Houston, Texas 77041, USA  
Phone 713-460-8311  
Fax 713-460-8578  
E-mail info@dopak.com

**Dovianus BV**  
Bergschenhoek, The Netherlands  
Phone +31 10 524 20 00  
Fax +31 10 456 67 74  
E-mail info@dopak.nl

**Your local representative:**