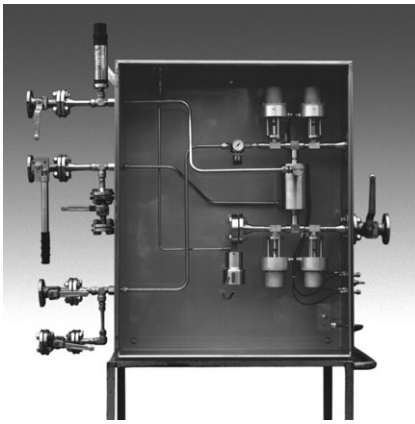


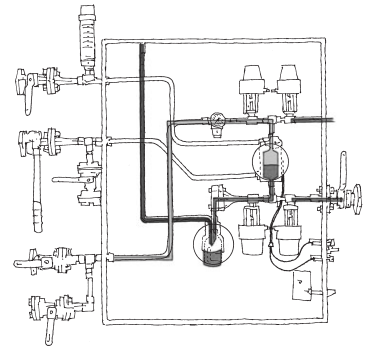
## DOPAK® Process Sampler Type S23

high temperature configuration

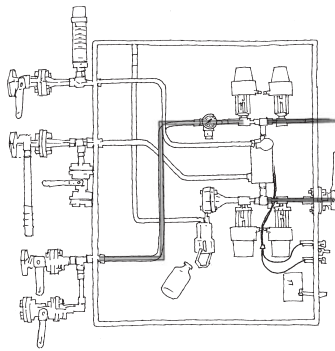


The ability to purge the sample point ensures optimal retrieval of a representative, contamination free sample. The S23 type sampler configuration special for high temperature provides a system purge and a fixed sample volume at the required temperature. A separate cooler is therefore not necessary.

The unique design offers a one-handle operation by multiple valves, allowing for sampling independent of the process conditions. These features provide sample accuracy and safety.

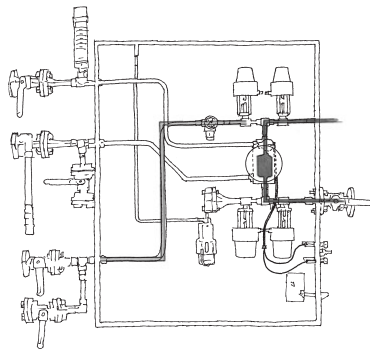


### 1 OPERATION/FUNCTION



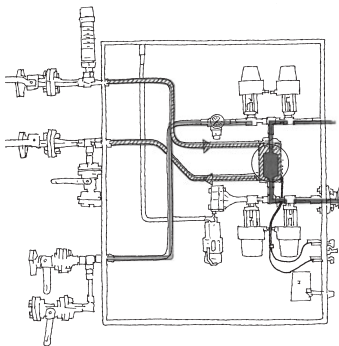
#### 0 - off

Provide a new septum on your sample bottle. Insert the bottle, with cap and septum into the sleeve until the septum is pierced by the needles. Put the bottle retaining clip in place.



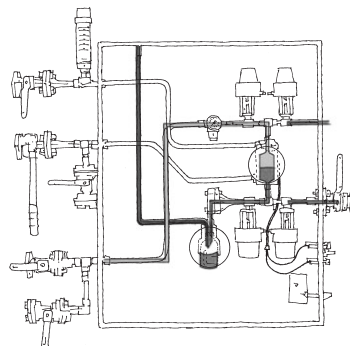
#### 1 - system purge

Turn the handle on the control unit to the "purge" position, allowing a continuous flow of liquid through the sample chamber to ensure representative sampling. This position can be held for any required time.



#### 2 - off/cooling

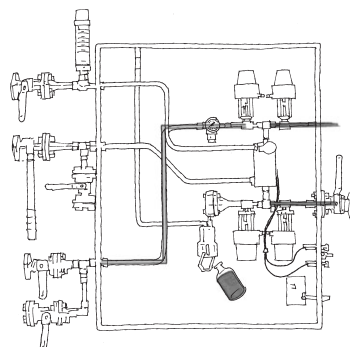
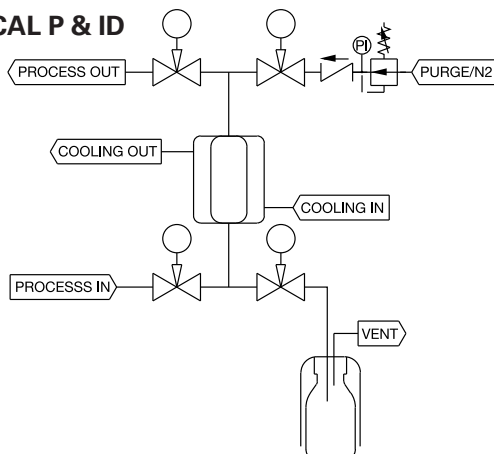
Turn the handle on the control unit to the "off" position and allow coolant to flow through the jacket. Keep this position for the required time in order to cool the liquid down to the required temperature.



#### 3 - sample

Turn the handle on the control unit to the "sample" position allowing the product to flow into the sample bottle. The fixed volume chamber determines the amount of sample. The inert gas will assist the sample to flow into the bottle and will purge the sampler. This position can be held for any required time.

### 2 TYPICAL P & ID



#### 4 - off

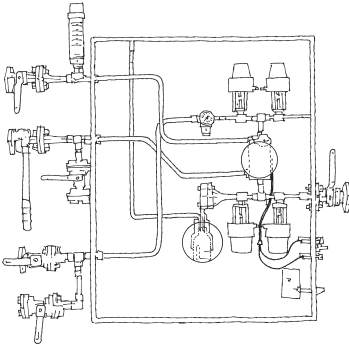
Turn the handle on the control unit to the "off" position. Remove the bottle retaining clip and pull the bottle out from the sleeve. The septum reseals automatically.



### 3 FEATURES/ADVANTAGES/PROPERTIES

- |                          |  |                          |                                       |
|--------------------------|--|--------------------------|---------------------------------------|
| <input type="checkbox"/> | Sampling independent of process conditions | <input type="checkbox"/> | Purging of sampler                    |
| <input type="checkbox"/> | Representative sampling                    | <input type="checkbox"/> | Positive vent line shut off           |
| <input type="checkbox"/> | Zero dead volume                           | <input type="checkbox"/> | Cooling of the sample                 |
| <input type="checkbox"/> | Closed sampling                            | <input type="checkbox"/> | High pressure and vacuum applications |
| <input type="checkbox"/> | One handle operation                       |                          |                                       |

### 4 BASIC SPECIFICATIONS

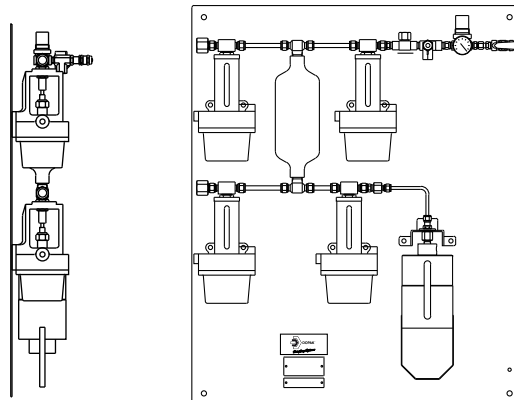
<b>Material</b>	SS316, SS316L.	
<b>Sleeve Type</b>	60cc sleeve with bottle retaining clip.	
<b>Needle assembly</b>	Single piece VTO needle assembly with vent to outlet connection 1/4" FNPT. Process/Vent needle ID: 1.35 mm	
<b>Sample Chamber</b>	50cc.	
<b>Valves</b>	Two-way high temperature needle valves type UW. PTFE seats, Viton A O-rings. Pressure range 103 bar @ 20°C (1500 psig @ 70°F). Temperature range -29°C/+648°C (-20°F/+1200°F).	
<b>Operation</b>	Manual.	
<b>Connections</b>	1/4" FNPT, regulator, gauge and check valve included. Cooling in/out : 1/2" FNPT	

**Please note:** the above is a basic specification only. Dopak Samplers can be offered with a wide variety of options as mentioned below.

### 5 OPTIONS

- |                          |                   |                          |                            |
|--------------------------|-------------------|--------------------------|----------------------------|
| <input type="checkbox"/> | Mounting plate    | <input type="checkbox"/> | Steam sterilising cap      |
| <input type="checkbox"/> | Pipe stand        | <input type="checkbox"/> | Welded connections         |
| <input type="checkbox"/> | Block valve       | <input type="checkbox"/> | Continuous needle purge    |
| <input type="checkbox"/> | Flow meter        | <input type="checkbox"/> | Exotic materials           |
| <input type="checkbox"/> | Enclosure         | <input type="checkbox"/> | Larger/smaller sample size |
| <input type="checkbox"/> | Mounting brackets | <input type="checkbox"/> | Temperature indicator      |

For more information please refer to our sheets:  
**Options for DOPAK® process sampler type S23.**  
**Components for DOPAK® process samplers.**



**Dopak Inc.**  
Houston, Texas 77041, USA  
Phone 713-460-8311  
Fax 713-460-8578  
E-mail info@dopak.com

**Dovianus BV**  
Bergschenhoek, The Netherlands  
Phone +31 10 542 20 00  
Fax +31 10 456 67 74  
E-mail info@dopak.nl

**Your local representative:**