

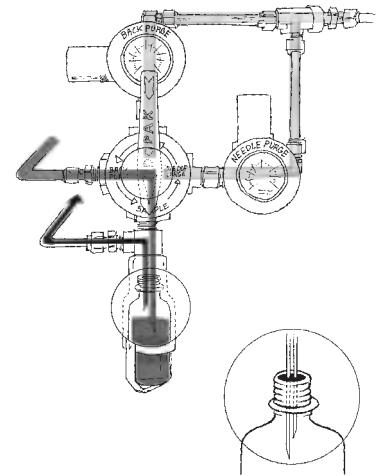
DOPAK® Process Sampler Type DPM

back & needle purge configuration

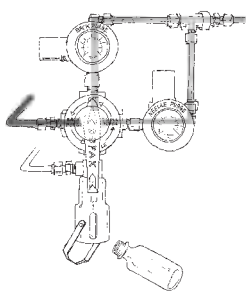


The ability to back purge the sample point ensures optimal retrieval of a representative, contamination free sample. The needle purge ensures there is no residue or build up in the needle after sample retrieval.

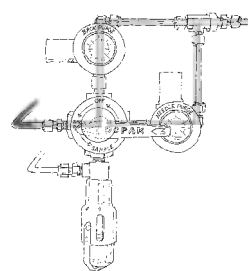
The DPM type sampler in back & needle purge configuration allows purge gas to flow through the sampler ensuring a fresh sample and allows purging through the needle assembly.



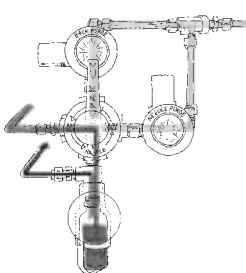
1 OPERATION/FUNCTION



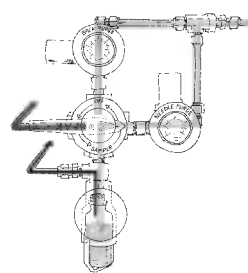
0 - off
Provide a new septum on your sample bottle. Insert the bottle, with cap and septum into the sleeve until the septum is pierced by the needles. Put the bottle retaining clip in place.



1 - back purge
Turn the handle to "back purge" position, allowing a flow of purge gas through the sampler to ensure representative sampling. This position can be held for any required time.

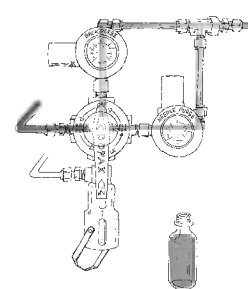
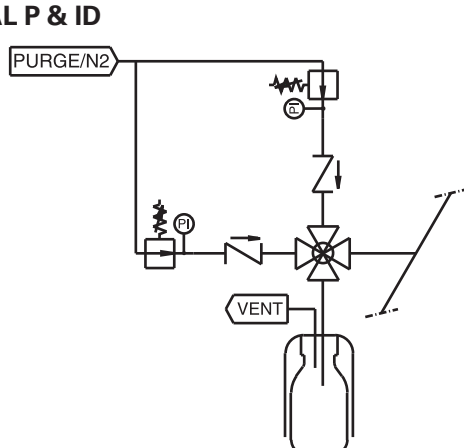


2 - sample
Turn the handle to the "sample" position, allowing the product to flow into the sample bottle. When the required amount has been taken, turn the handle to the "needle purge" position.



3 - needle purge
Turn the handle to the "needle purge" position, allowing a flow of purge gas through the sampler to ensure any residual liquid is forced into the sample bottle. This position can be held for any required time.

2 TYPICAL P & ID



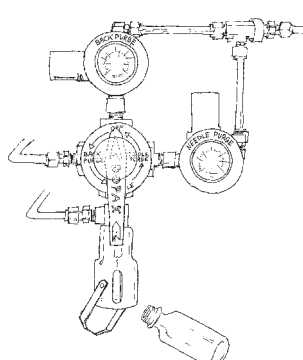
4 - off
Turn the handle to the "off" position. Remove the bottle retaining clip and pull the bottle out from the sleeve. The septum reseals automatically.



3 FEATURES/ADVANTAGES/PROPERTIES

- | | | | |
|--------------------------|--|--------------------------|---|
| <input type="checkbox"/> | Sampling directly under process conditions | <input type="checkbox"/> | Closed sampling |
| <input type="checkbox"/> | Low pressure application | <input type="checkbox"/> | No build up of sample material in needle assembly |
| <input type="checkbox"/> | Representative sampling | <input type="checkbox"/> | Purging the sample bottle with an inert gas |
| <input type="checkbox"/> | Zero dead volume | | |

4 BASIC SPECIFICATIONS

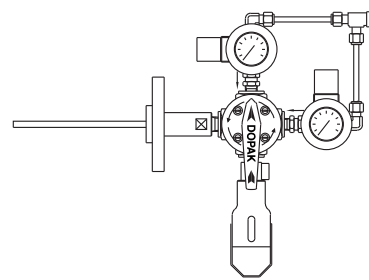
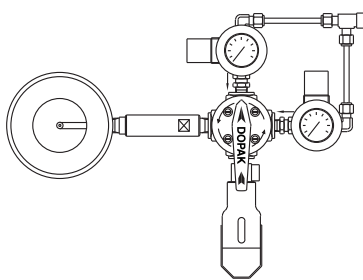
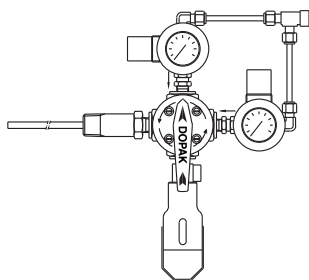
Material	SS316, SS316L.	
Sleeve Type	60cc sleeve with bottle retaining clip.	
Needle Assembly	Single piece VTO needle assembly with vent to outlet connection 1/4" FNPT. Process/vent needle ID:1.35 mm.	
Valve	Four-way ball valve. PTFE seats, Viton O-rings. Pressure range 103 bar @ 20°C (1500 psig @ 70°F). Temperature range -18/+179°C (0/+354°F).	
Operation	Manual.	
Connections	1/4" FNPT, regulator, gauge and check valve included.	

Please note: the above is a basic specification only. DOPAK® Samplers can be offered with a wide variety of options as mentioned below.

5 OPTIONS

- | | | | |
|--------------------------|----------------------|--------------------------|----------------------------|
| <input type="checkbox"/> | Spring return handle | <input type="checkbox"/> | Mounting bracket |
| <input type="checkbox"/> | Lockable handle | <input type="checkbox"/> | Steam sterilising cap |
| <input type="checkbox"/> | Mounting plate | <input type="checkbox"/> | Welded connection |
| <input type="checkbox"/> | Pipe stand | <input type="checkbox"/> | Continuous needle purge |
| <input type="checkbox"/> | Block valve | <input type="checkbox"/> | Solvent purge |
| <input type="checkbox"/> | Flow meter | <input type="checkbox"/> | Exotic materials |
| <input type="checkbox"/> | Enclosure | <input type="checkbox"/> | Larger/smaller sample size |
| <input type="checkbox"/> | Sample cooler | | |

For more information please refer to our sheets:
Options for DOPAK® process sampler type DPM.
Components for DOPAK® process samplers.



Dopak Inc.
Houston, Texas 77041, USA
Phone 713-460-8311
Fax 713-460-8578
E-mail info@dopak.com

Dovianus BV
Bergschenhoek, The Netherlands
Phone +31 10 542 20 00
Fax +31 10 456 67 74
E-mail info@dopak.nl

Your local representative: