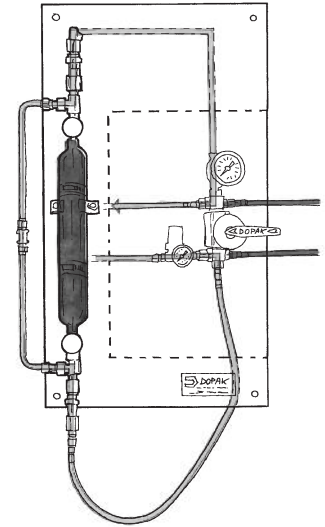


**DOPAK® Process Sampler Type S32-G**

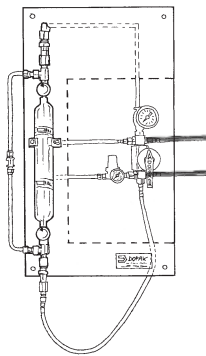
**bypass purge cylinder configuration**



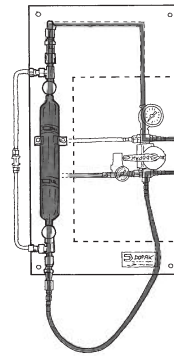
The ability to purge the sample point ensures optimal retrieval of a representative, contamination free sample. The S32-G type samplers provide a system purge in addition to sampling in a sample cylinder, to purge the sample cylinder connections and the ability to depressurise the quick connect couplings before disconnecting the sample cylinder. The unique design offers a one-handle operation by multiple valves. These features provide sample accuracy and safety.



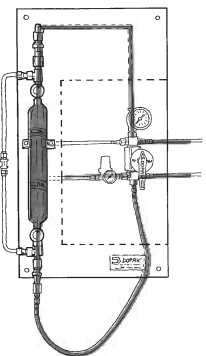
**1 OPERATION/FUNCTION**



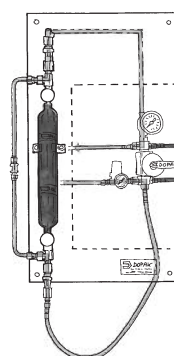
**0 - off**  
Install the sample cylinder and connect the flexible hose to the bottom side of the sample cylinder. Open the needle valves of the sample cylinder.



**1 - system purge**  
Turn the handle to the "process" position allowing the sample cylinder to be filled. To ensure a representative sample, this position can be held for any required time.

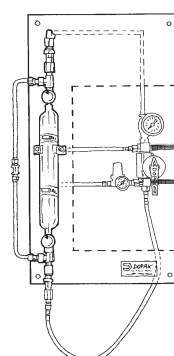
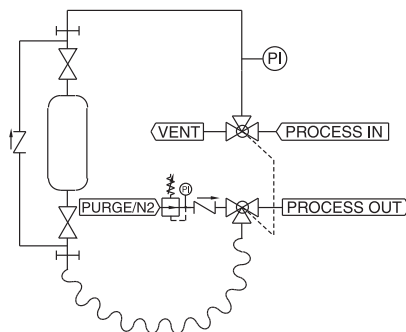


**2 - off**  
Turn the handle to the "off" position. Close the two needle valves of the sample cylinder.



**3 - purge**  
Turn the handle to the "purge" position. The internal connection between the sample cylinder and the purge connection has now been made. The quick connects and bypass on the cylinder are being purged with low pressure nitrogen to the vent connection.

**2 TYPICAL P & ID**



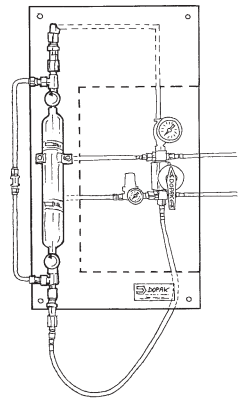
**4 - off**  
Turn the handle to the "off" position. Disconnect the flexible hose. Remove the sample cylinder.



### 3 FEATURES/ADVANTAGES/PROPERTIES

- |  |   |
|--|---|
| <input type="checkbox"/> Sampling in cylinder with predefined filling rate | <input type="checkbox"/> Fixed volume sampling                                    |
| <input type="checkbox"/> Representative sampling                           | <input type="checkbox"/> Purging of sampler                                       |
| <input type="checkbox"/> Zero dead volume                                  | <input type="checkbox"/> No direct connection between vent line and process lines |
| <input type="checkbox"/> Closed sampling                                   | <input type="checkbox"/> Purging of quick connect couplings                       |
| <input type="checkbox"/> One handle operation of multiple valves           | <input type="checkbox"/> No outage tubes  |

### 4 BASIC SPECIFICATIONS

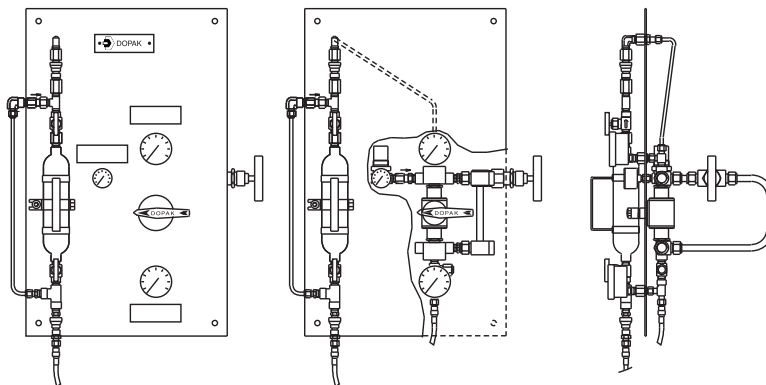
<b>Material</b>	SS316, SS316L.	
<b>Cylinder Type</b>	500cc cylinder.	
<b>Valves</b>	Three-way ball valve type W83. PTFE seats, Viton A O-rings. Pressure range 103 bar @ 20°C (1500 psig @ 70°F). Temperature range -17°C/+232°C (0°F/+450°F).	
<b>Operation</b>	Manual.	
<b>Connections</b>	1/4" FNPT, including check valve, pressure gauge and regulator.	

**Please note:** the above is a basic specification only. Dopak Samplers can be offered with a wide variety of options as mentioned below.

### 5 OPTIONS

- |   |   |
|---|---|
| <input type="checkbox"/> Spring return handle | <input type="checkbox"/> Enclosure                  |
| <input type="checkbox"/> Lockable handle      | <input type="checkbox"/> Sample cooler              |
| <input type="checkbox"/> Pipe stand           | <input type="checkbox"/> Exotic materials           |
| <input type="checkbox"/> Block valve          | <input type="checkbox"/> Larger/smaller sample size |
| <input type="checkbox"/> Flow meter           |   |

For more information please refer to our sheets:  
**Options for DOPAK® process sampler type S32-G.**  
**Components for DOPAK® process samplers.**



**Dopak Inc.**  
Houston, Texas 77041, USA  
Phone 713-460-8311  
Fax 713-460-8578  
E-mail info@dopak.com

**Dovianus BV**  
Bergschenhoek, The Netherlands  
Phone +31 10 524 20 00  
Fax +31 10 456 67 74  
E-mail info@dopak.nl

**Your local representative:**