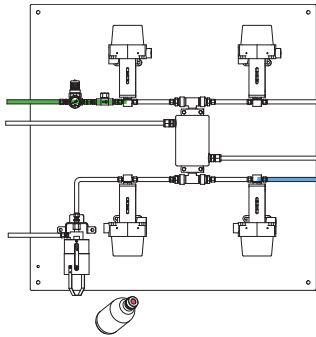
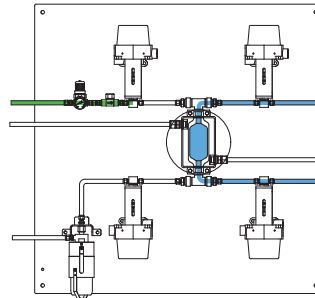


The ability to purge the sample point ensures optimal retrieval of a representative, contamination free sample. The S23 type sampler configuration special for high temperature provides a system purge and a fixed sample volume at the required temperature. A separate cooler is therefore not necessary. The unique design offers a one-handle operation by multiple valves, allowing for sampling independent of the process conditions. These features provide sample accuracy and safety.

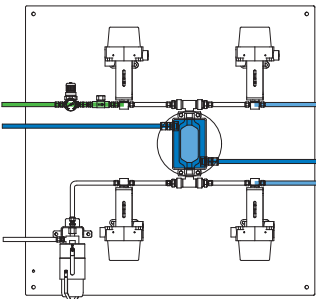
1 OPERATION/FUNCTION



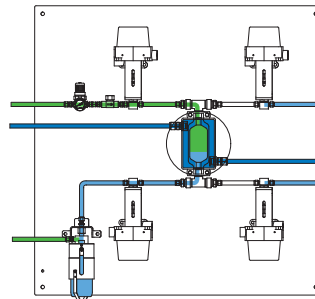
0 - off
Provide a new septum on your sample bottle. Insert the bottle, with cap and septum into the sleeve until the septum is pierced by the needles. Put the bottle retaining clip in place.



1 - system purge
Turn the handle on the control unit to the "bypass" position, allowing a continuous flow of liquid through the sample chamber to ensure representative sampling. This position can be held for any required time.

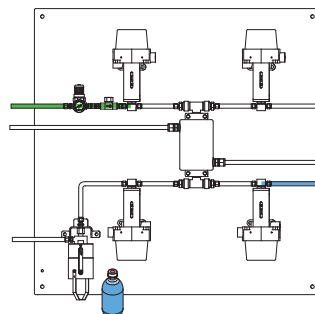
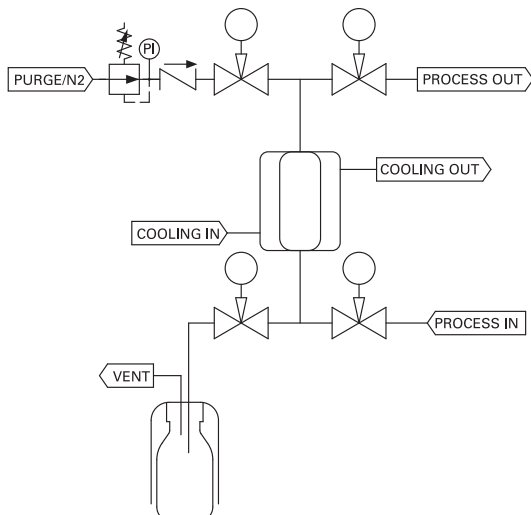


2 - off/cooling
Turn the handle on the control unit to the "off" position and allow coolant to flow through the jacket. Keep this position for the required time in order to cool the liquid down to the required temperature.



3 - sample
Turn the handle on the control unit to the "sample" position allowing the product to flow into the sample bottle. The fixed volume sample chamber determines the amount of sample. The inert gas will assist the sample to flow into the bottle and will purge the sampler. This position can be held for any required time.

2 TYPICAL P & ID



4 - off
Turn the handle on the control unit to the "off" position. Remove the bottle retaining clip and pull the bottle out from the sleeve. The septum reseals automatically.

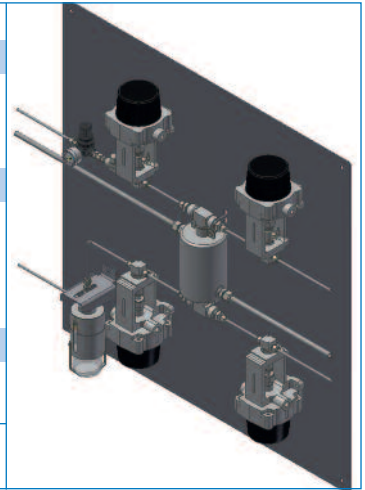


3 FEATURES/ADVANTAGES/PROPERTIES

- Sampling independent of process conditions
- Representative sampling
- Zero dead volume
- Closed sampling
- One handle operation
- Purging of sampler
- Positive vent line shut off
- Cooling of the sample
- High pressure and vacuum applications

4 BASIC SPECIFICATIONS

Material	SS316, SS316L.
Sleeve type	60cc sleeve with bottle retaining clip.
Needle assembly	Single piece VTO needle assembly with vent to outlet connection 1/4" FNPT. Process/vent needle ID: 1.35 mm.
Sample chamber	50cc.
Valves	Two-way high temperature needle valves type UW. PTFE seats, Viton A O-rings. Pressure range 103 bar @ 20°C (1500 psig @ 70°F). Temperature range -29°C/+648°C (-20°F/+1200°F).
Operation	Manual.
Connections	1/4" FNPT, regulator, gauge and check valve included. Cooling in/out : 1/2" FNPT
Please note:	the above is a basic specification only. DOPAK® Samplers can be offered with a wide variety of options as mentioned below.



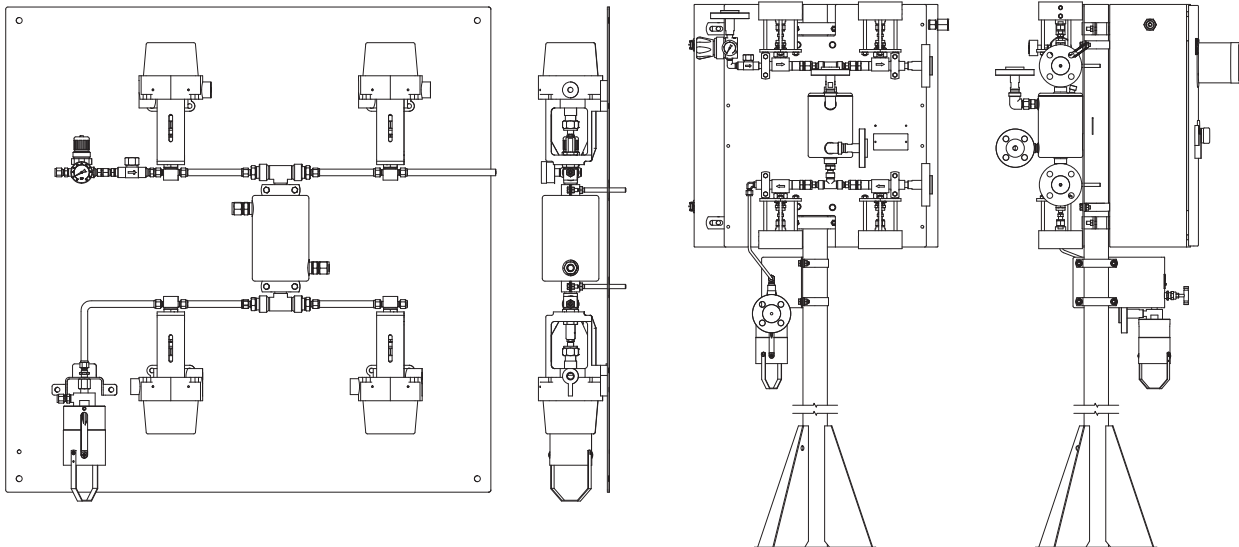
5 OPTIONS

- Mounting plate
- Pipe stand
- Block valve
- Flow meter
- Enclosure
- Mounting brackets
- Steam sterilising cap
- Welded connections
- Continuous needle purge
- Exotic materials
- Larger/smaller sample size
- Temperature indicator

For more information please refer to our sheets:

Options for DOPAK® process samplers, sampling into a bottle.

Components for DOPAK® process samplers.



Dopak Inc.

Houston, Texas 77041, USA
 Phone 713-460-8311
 Fax 713-460-8578
 E-mail info@dopak.com

Dovianus BV

Bergschenhoek, The Netherlands
 Phone +31 10 524 20 00
 Fax +31 10 524 20 29
 E-mail info@dopak.nl

Your local representative:

